

# NOTES:

1. DEVICES WITHOUT LOCATION SYMBOLS ARE LOCATED IN MOTOR CONTROL CENTER EE103MCC112 UNIT 4C.
2. LAST USED WIRE NO. 7-CK04. (BLANK CIRCUIT: 4-CK04)
3. REFERENCES: B-208-030 CK-06
4. LOCATION SYMBOLS: CK - CK001PNL001 CPS MAIN CONTROL PANEL
5. \* CK110PMP-001

Nuklearna Elektrarna KRSKO  
MASTER DOCUMENT  
Date Received: 15-07-2004  
Log Number: 64985

NUKLEARNA ELEKTRARNA KRSKO NUCLEAR POWER PLANT KRSKO		
ELECTRICAL - ELEMENTARY DIAGRAM		
CONDENSATE POLISHING SYSTEM		
DECARBONIZED WATER TRANSFER PUMP 1 CK110PMP-001		
DESIGN ENGINEERING		
NUCLEAR POWER PLANT KRSKO		KRSKO, SLOVENIA
MADE	CHECKED	LE APPROVAL
1. F. FAKIN	2. M. KODRIC	3. V. DIRNBEK
REFERENCE DRAWINGS:		
SCALE	B-208-030 CK 04 4	
DRAWING NUMBER		SYSTEM SH.NO. REV

Original Design Firm: HIDROMONTAŽA Maribor  
Replaced Manual Drawing: B-208-030 SH.04  
Last Revision And Date: 1 01.1990

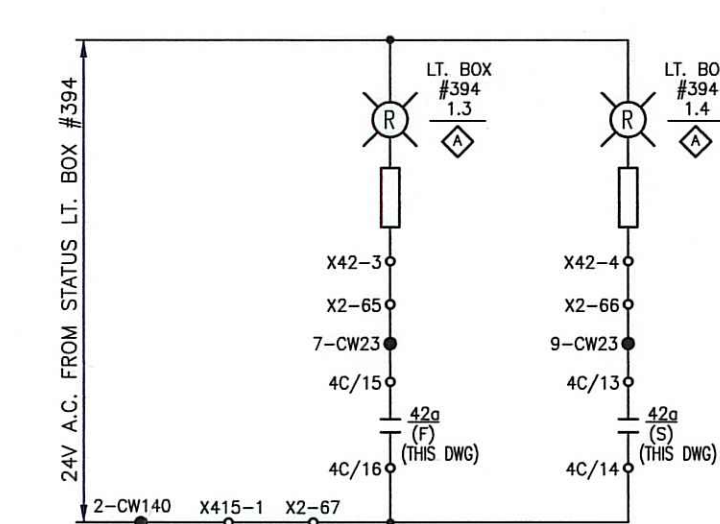
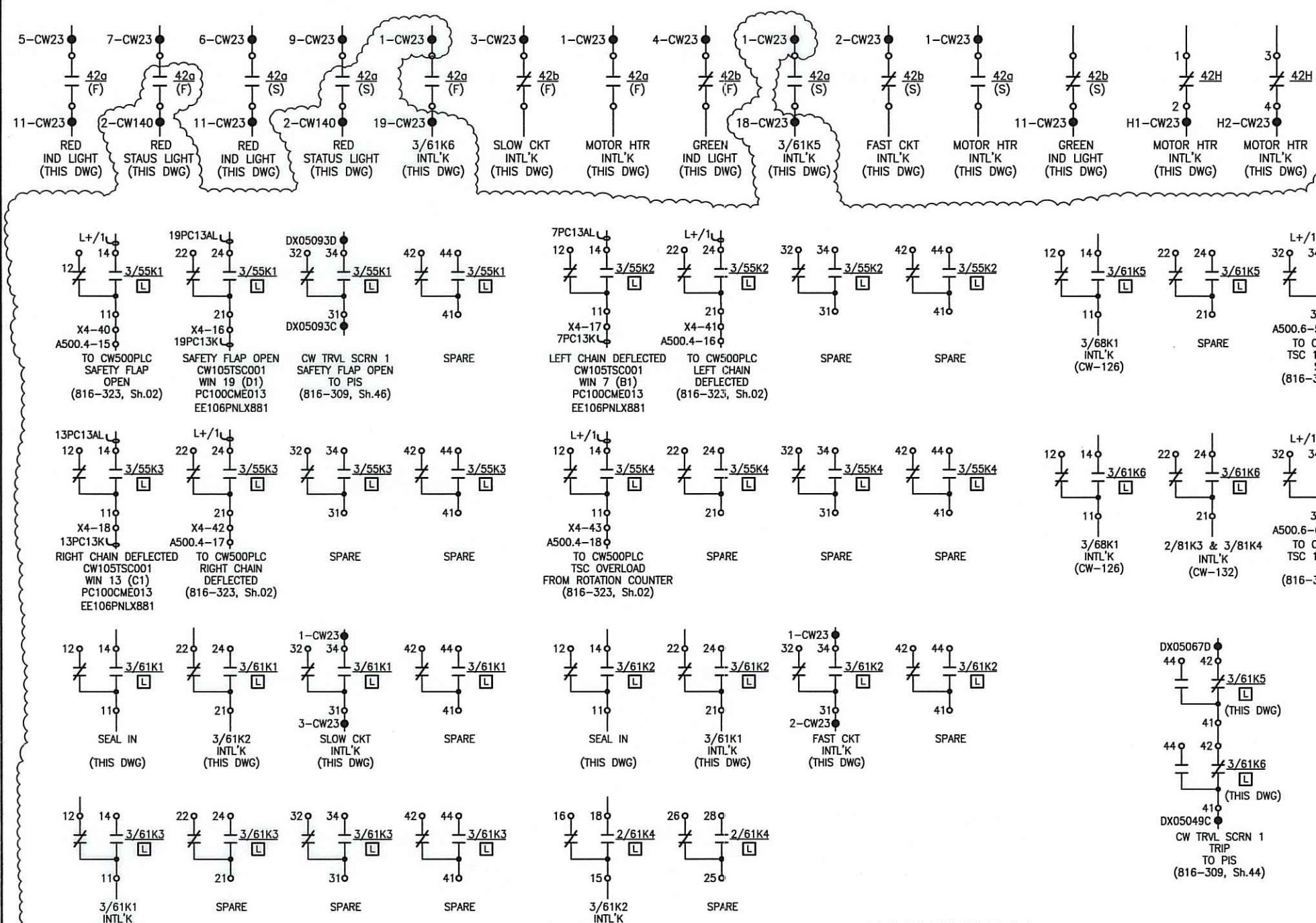
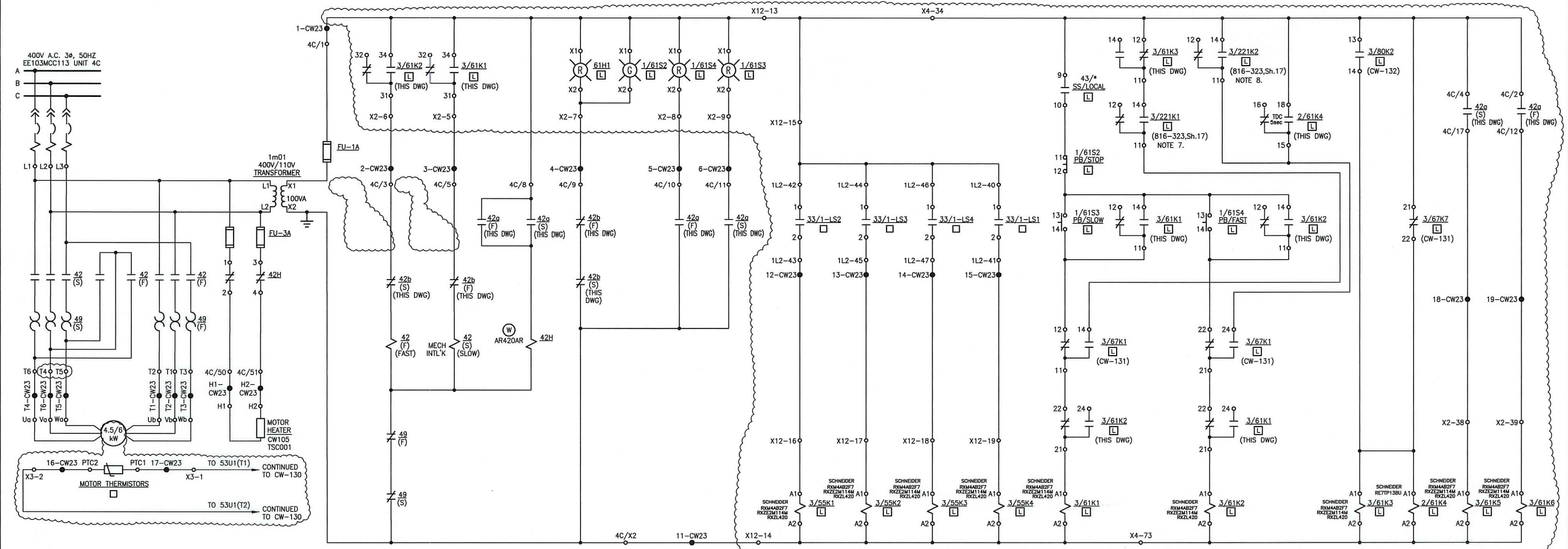
THIS IS A CAD DRAWING AND SHOULD NOT BE REVISED OR MODIFIED MANUALLY

NO.	DATE	BY	REVISION	CKD.	BY	LE APPR.
4	07.2004	...	REV'D PER MOD. 392-CK-L	...	...	...
3	10.2001	...	REV'D PER EEAR: 01-106	...	...	...
2	18.11.97	...	CADD CONVERSION	...	...	...









- NOTES:**
- DEVICES WITHOUT LOCATION SYMBOLS ARE LOCATED IN MCC BY (W)
  - LAST USED WIRE NO. 19-CW23, UNUSED WIRES 8-CW23 AND 10-CW23
  - REFERENCES:  
FLUID SYSTEM DIAGRAM GAL DWGS D-302-201 & D-302-203
  - LOCATION SYMBOLS:  
□ LOCALLY MOUNTED BY METALNA AT CW105TSC001  
□ TRAVELING SCREEN & SCREEN WASH CONT PNL EE106PNLX861  
△ MAIN CONTROL BOARD SECTION A
  - DEVICES (SUPPLIED BY METALNA)  
33/1-LS1 - TSC OVERLOAD (FROM ROTATION COUNTER)  
33/1-LS2 - CONTACT CLOSING WHEN SAFETY FLAP IS OPEN  
33/1-LS3, 33/1-LS4 - CONTACT CLOSING WHEN CHAIN IS DEFLECTED
  - \* - CW105TSC001
  - TRAV. SCR. LOW SPEED AUTO OPERATION STARTS AT LEVEL DIFF. ΔH=0.4 m.
  - TRAV. SCR. HIGH SPEED AUTO OPERATION STARTS AT LEVEL DIFF. ΔH=0.6 m.

Nuklearna Elektra Krško  
MASTER DOCUMENT  
Date Received: 26-05-2017  
Log Number: 14780

Original Design Firm: GAL-Gilbert Associates, Inc.  
Replaced Manual Drawing: B-208-039 SH.23  
Last Revision And Date: 11 03.1995

THIS IS A CAD DRAWING AND SHOULD NOT BE REVISED OR MODIFIED MANUALLY

NO.	DATE	BY	REVISION	CKD. BY	LE APPR.
16	05.2017	REV'D PER MOD 1044-CW-L			
15	09.05.12	K.K. REV'D PER MOD 717-CW-L & AS-BUILT		S.J.	B.P.
14	27.10.04	IBE REV'D PER MOD 439-CW-L & AS-BUILT		B.B.	D.V.
13	15.01.01	M.K. REV'D PER EEAR 00-264		S.J.	J.C.
12	04.05.98	M.K. CADD CONV. & REV'D PER EEAR 98-029		B.B.	V.D.

**NUKLEARNA ELEKTRARNA KRŠKO**  
**NUCLEAR POWER PLANT KRŠKO**

**ELECTRICAL - ELEMENTARY DIAGRAM**  
**CIRCULATING WATER SYSTEM**

TRAVSCRN 1 CW105TSC001 EE103MCC113 UNIT 4C

**DESIGN ENGINEERING**

MADE	CHECKED	LE APPROVAL
1. M. KODRIČ	2. B. BAŠIČ	3. V. DIRNBEK

REFERENCE: SS-211-039 SH. C-25, C-49 & W-7

SCALE: **B-208-039** **CW** **23** **16**

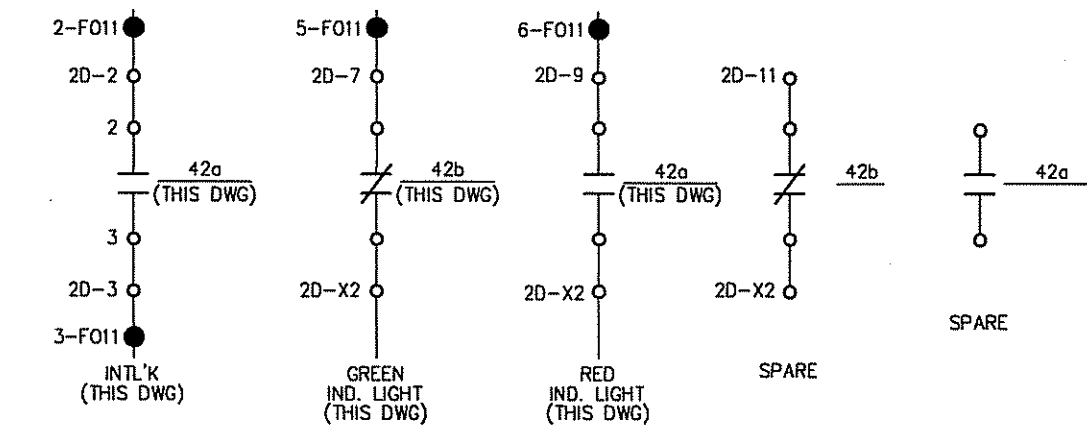
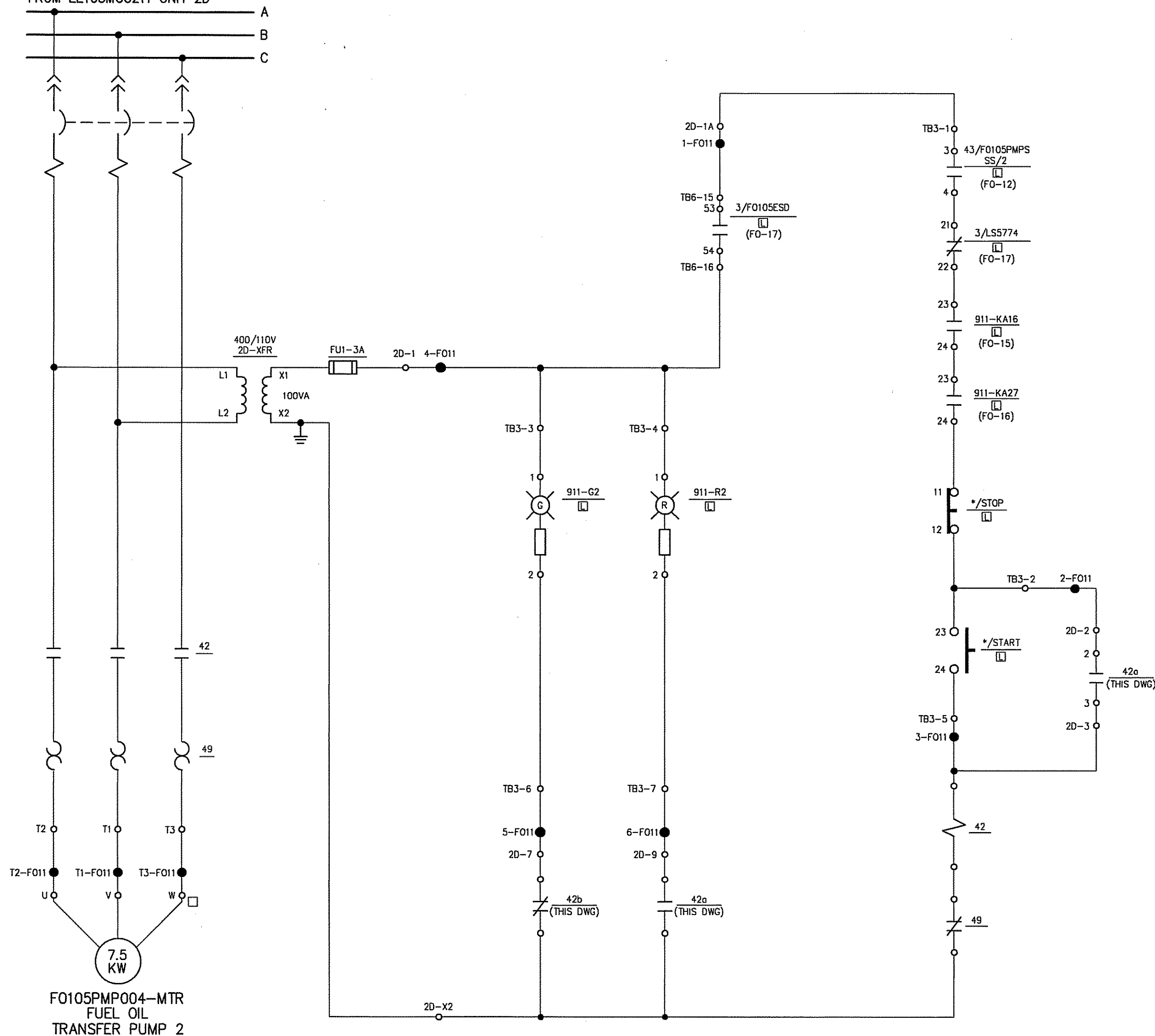
DRAWING NUMBER: **B-208-039** SYSTEM: **CW** SH.NO.: **23** REV: **16**







400V AC 3Ø 50 HZ  
FROM EE103MCC211 UNIT 2D



NOTES: -

1. DEVICES WITHOUT LOCATION SYMBOLS ARE LOCATED IN MCC.
2. LAST USED WIRE No. 6-F011.
3. LOCATION SYMBOLS:  
☐ LOCAL MOUNTED  
☐ EE106PNL911
4. REFERENCE:  
SYSTEM FUNCTIONAL DIAGRAM GAI DWG. B-802-280  
INSTRUMENT LOOP DIAGRAM GAI DWG. B-808-280  
FUEL OIL AUXILIARY BOILER FLUID DIAG. D-302-281.
5. \* - 1/F0105PMP004

NUKLEARNA ELEKTRARNA KRŠKO  
MASTER DOCUMENT  
Rev. Received: 14-02-2022  
Log. Number: 274053

NUKLEARNA ELEKTRARNA KRŠKO NUCLEAR POWER PLANT KRŠKO		
ELECTRICAL - ELEMENTARY DIAGRAM		
FUEL OIL SYSTEM		
FUEL OIL TRANSFER PUMP 2 F0105PMP-004 EE103MCC211 UNIT 2D		
DESIGN ENGINEERING		
NUCLEAR POWER PLANT KRŠKO KRŠKO, SLOVENIA		
MADE	CHECKED	LE APPROVAL
1. A. KUSEC	2. B. PISANSKI	3. B. PEVEC
REFERENCE SS-211-062 sh. C-6 & C-8		
DRAWINGS:		
SCALE	B-208-062	FO 11 0
DRAWING NUMBER		SYSTEM SH.NO. REV

Original Design Firm: EKONERG d.o.o.  
Replaced Manual Drawing: N/A  
Last Revision And Date: N/A

THIS IS A CAD DRAWING AND SHOULD NOT BE REVISED OR MODIFIED MANUALLY

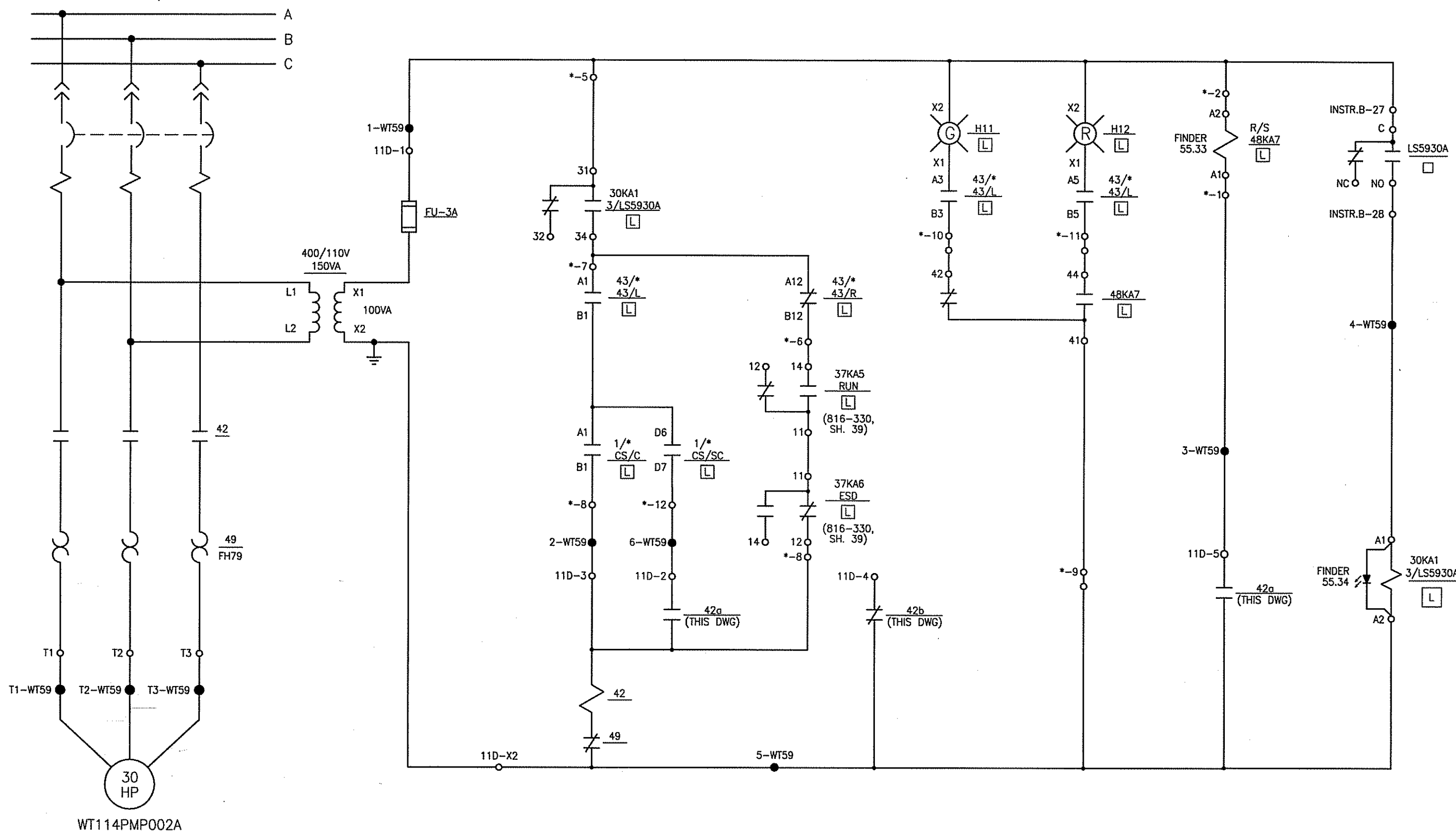
NO.	DATE	BY	REVISION	CKD. BY	LE APPR.
0	08.2021.		ISSUED PER MOD. 1224-F0-L		





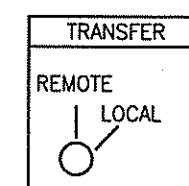


EE103MCC211 UNIT 11D  
3x380V, 50Hz

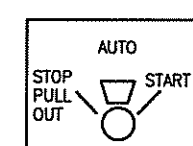


NOTES:-

1. LAST USED WIRE NO. 6-WT59.
2. LOCATION WITHOUT SYMBOLS ARE LOCATED IN MOT. CONT. CTR EE103MCC211 UNIT 11D.
3. LOCATION SYMBOLS:  
[L] - DEMINERALIZED WTR. CONT. PNL. WT903PNL
4. \* - WT114PMP002A



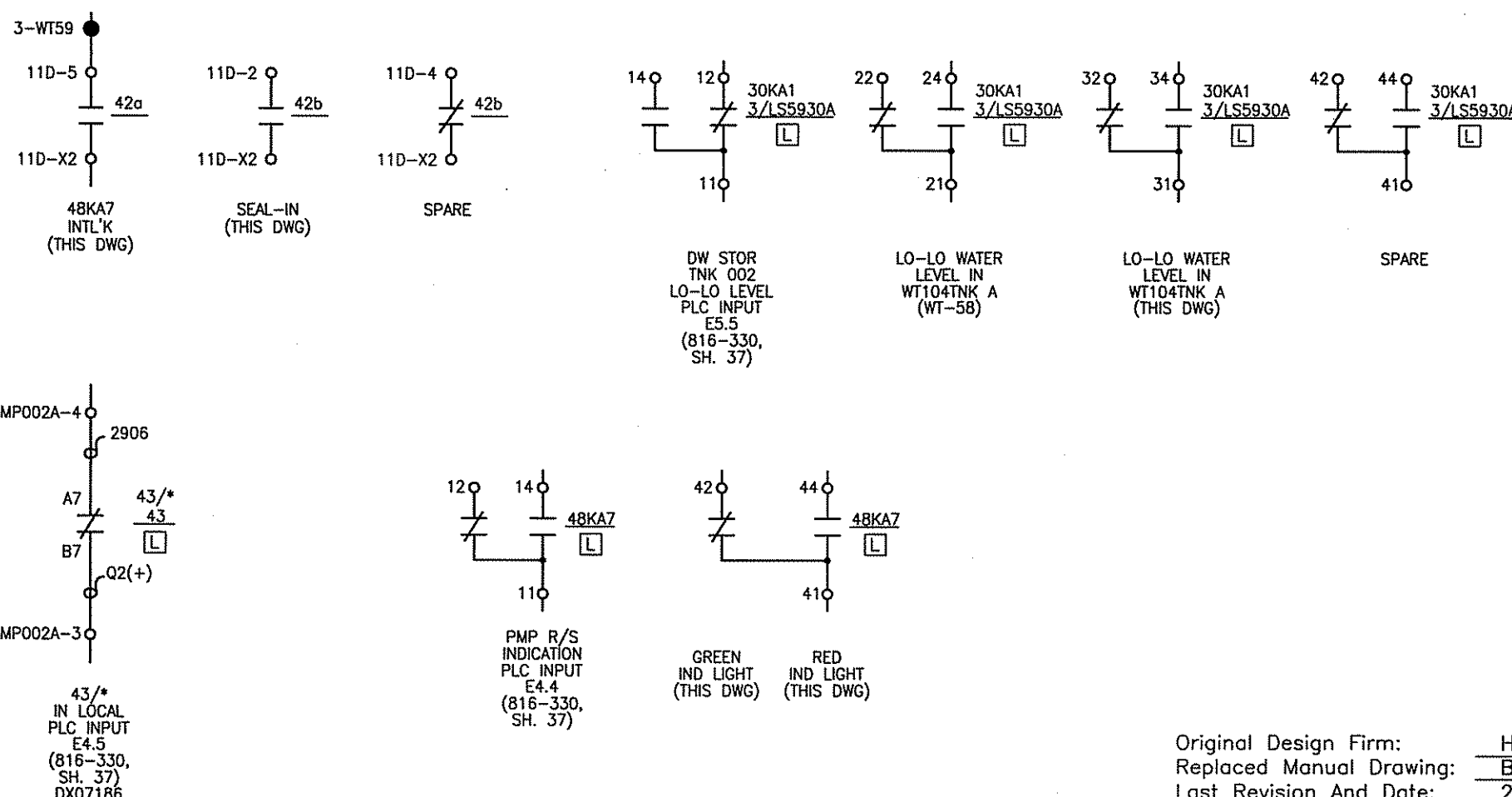
CONTACT	POSITION	
	R	L
A12-B12	X	
A1-B1		X
A2-B2	X	
A3-B3		X
A4-B4	X	
A5-B5		X
A6-B6	X	
A7-B7		X
A8-B8	X	
A9-B9		X
A10-B10	X	
A11-B11		X
C12-D12	X	
C1-D1		X
C2-D2	X	
C3-D3		X
C4-D4	X	
C5-D5		X
C6-D6	X	
C7-D7		X
C8-D8	X	
C9-D9		X
C10-D10	X	
C11-D11		X



CONTACTS HANDLE END	POSITIONS					
	P	T	T	C	C	C
A11-B11	X	X				
A12-B12			X	X		
A1-B1					X	
A5-A6	X	X	X			
A6-A7				X	X	
B5-B6	X	X	X			
B6-B7				X	X	
C11-D11	X	X				
C12-D12			X	X		
C1-D1					X	
C5-C6	X	X	X			
C6-C7				X	X	
D5-D6	X	X	X			
D6-D7				X	X	
E12-E1	X					
F12-F1		X	X	X	X	
E6-E7	X					
F6-F7		X	X	X	X	

TYPE W-2 SWITCH 3-POSITION  
SPRING RETURN TO CENTER  
BASIC SWITCH S#508A262G16  
PISTOL GRIP FIXED HANDLE

TYPE W-2 SWITCH 2 POSITION  
MAINTAINED  
BASIC SWITCH S#505A759G05  
PISTOL GRIP FIXED HANDLE



Nuklearna Elektrarna Krško  
MASTER DOCUMENT

Date Received: 03-09-2014  
Log Number: 65835

NUKLEARNA ELEKTRARNA KRŠKO  
NUCLEAR POWER PLANT KRŠKO

ELECTRICAL - ELEMENTARY DIAGRAM

WATER TREATMENT SYSTEM

DEMIN WATER TRANSFER PMP WT114PMP002A

DESIGN ENGINEERING

NUCLEAR POWER PLANT KRŠKO KRŠKO, SLOVENIA

MADE

CHECKED

LE APPROVAL

1. Z. STUDENY

2. M. SUŠNIČ

3. V. DIRNBEK

REFERENCE  
DRAWINGS: SS-211-156, SH. C-39, SH.C-57

SCALE

B-208-156

WT 59 9

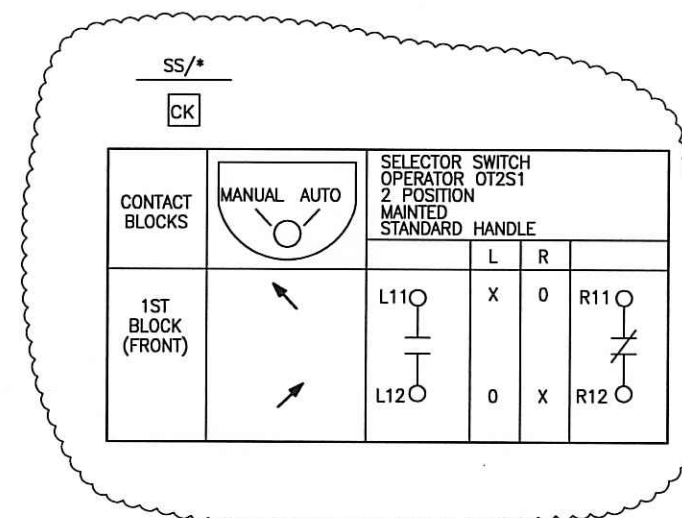
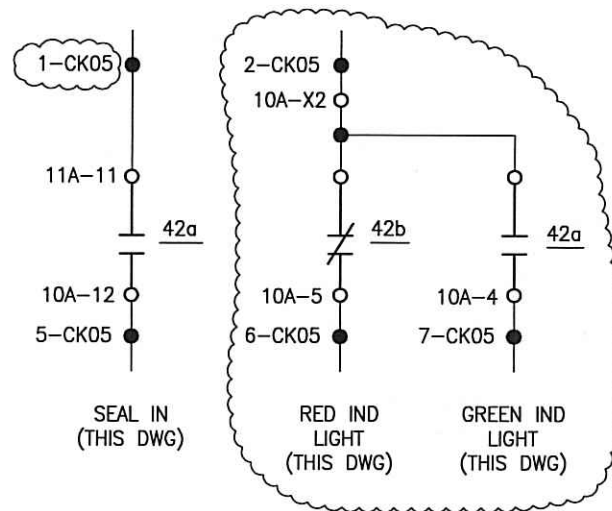
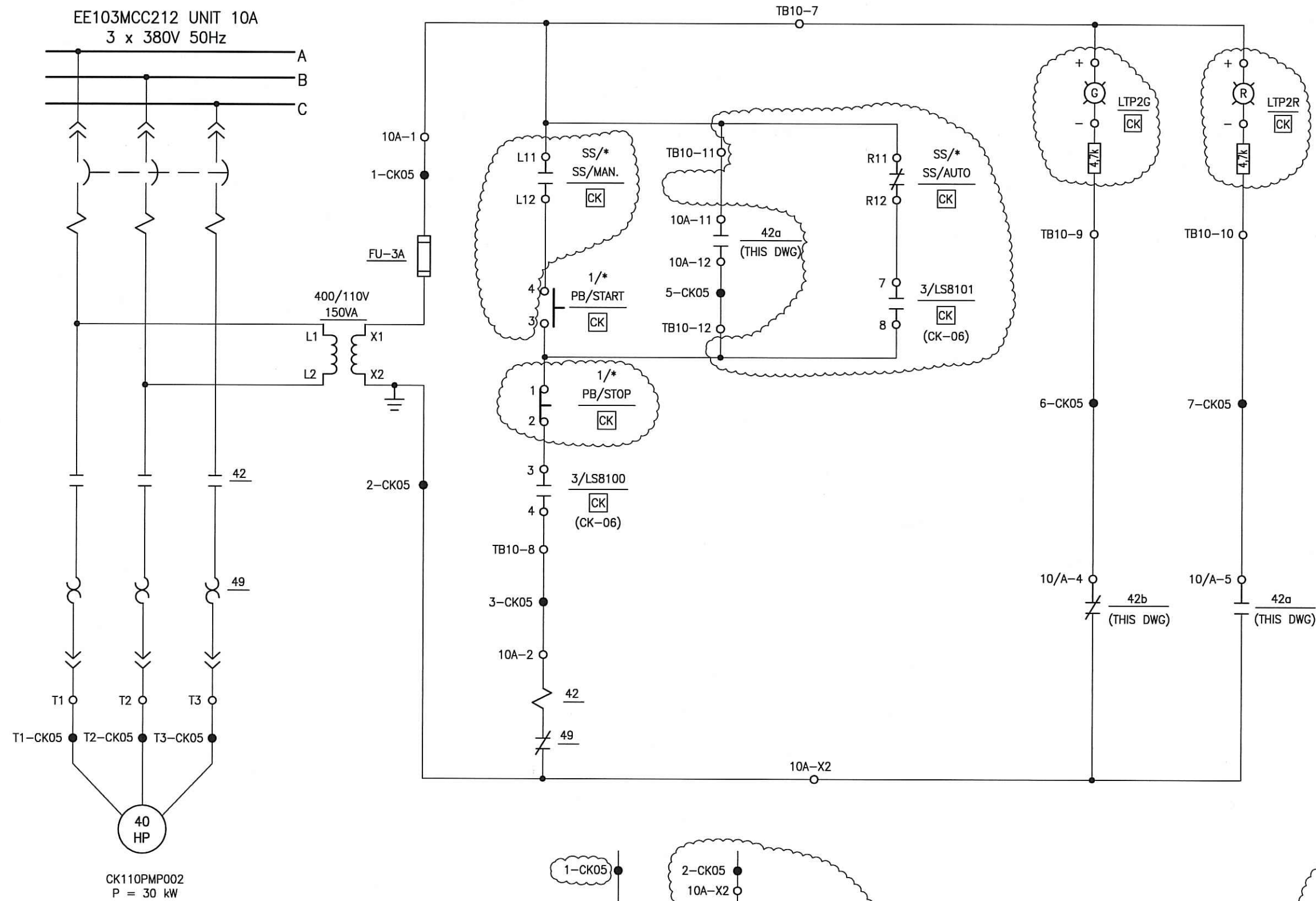
DRAWING NUMBER

SYSTEM SH.NO. REV

Original Design Firm: HIDROMONTAŽA MARIBOR  
Replaced Manual Drawing: B-208-156 SH.59  
Last Revision And Date: 2 26.02.1998

THIS IS A CAD DRAWING AND SHOULD NOT BE REVISED OR MODIFIED MANUALLY

9	01.09.14	K.K.	REV'D PER CAP 2014-972		
8	03.07.14	F.F.	REV'D PER CAP 2014-972	M.D.	B.P.
7	03.08.11	K.K.	REV'D PER CAP 2009-1384	D.S.	B.P.
6	20.04.09	M.S.	REV'D PER MOD. 626-DD-L	D.S.	B.P.
5	30.09.04	B.Z.	REV'D PER MOD. 249-WT-L	B.P.	D.V.
NO.	DATE	BY	REVISION	CKD. BY	LE APPR.



- NOTES:
1. DEVICES WITHOUT LOCATION SYMBOLS ARE LOCATED IN MOTOR CONTROL CENTER EE103MCC212 UNIT 10A.
  2. LAST USED WIRE NO. 7-CK05. BLANK CIRCUIT 4-CK05
  3. REFERENCES: B-208-030 CK-06
  4. LOCATION SYMBOLS:  
CK - CK001PNL001 CPS MAIN CONTROL PANEL
  5. \* CK110PMP-002

Nuklearna Elektrarna Krško  
MASTER DOCUMENT  
Date Received: 15-07-2004  
Log Number: 64998

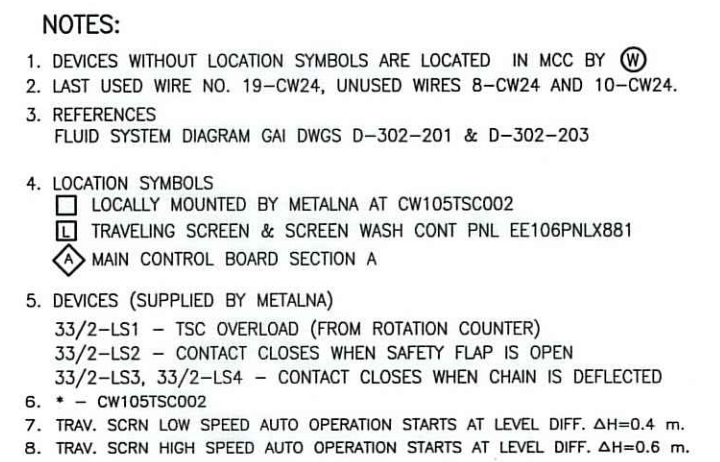
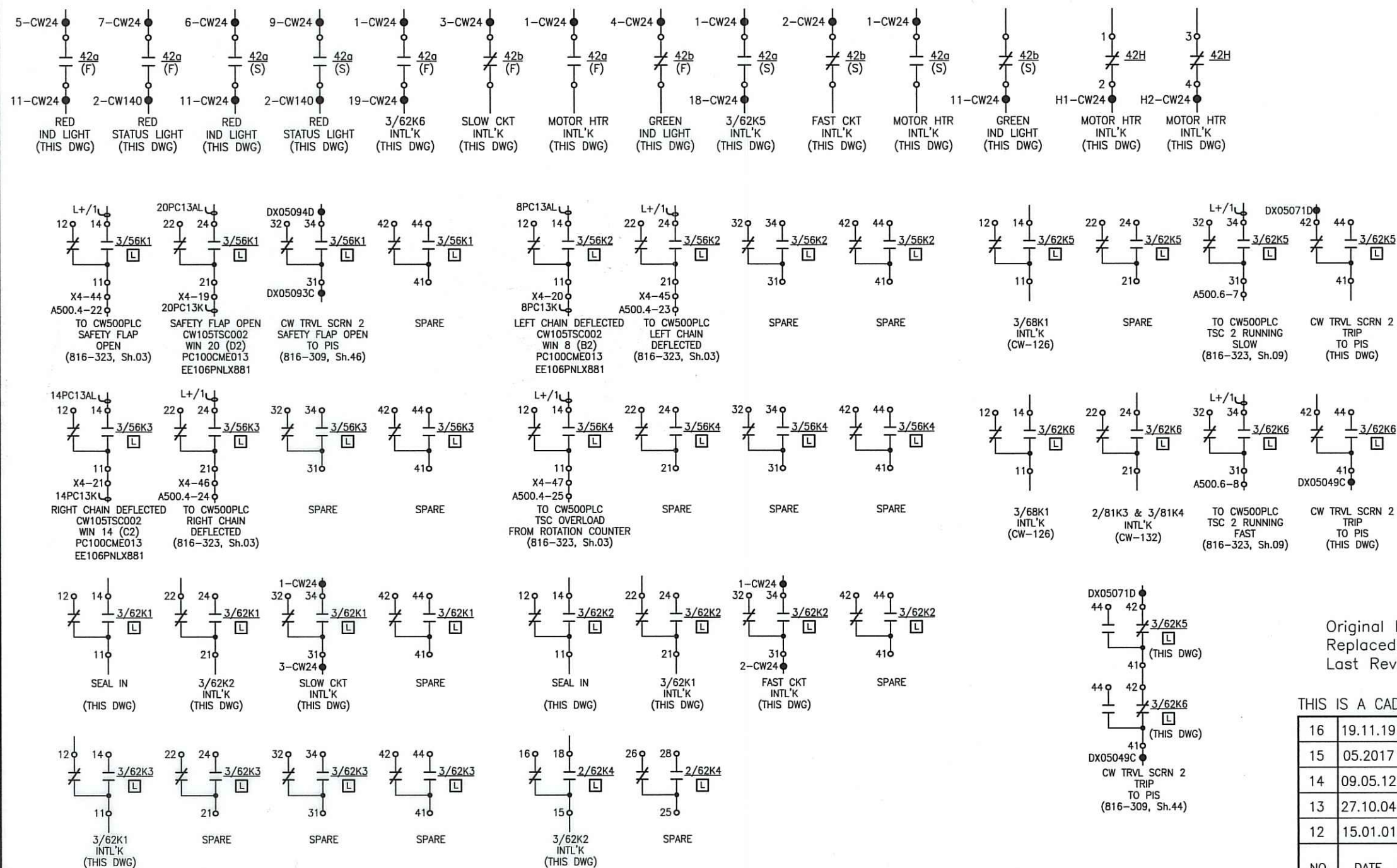
NUKLEARNA ELEKTRARNA KRŠKO NUCLEAR POWER PLANT KRŠKO			
ELECTRICAL - ELEMENTARY DIAGRAM			
CONDENSATE POLISHING SYSTEM			
DECARBONIZED WATER TRANSFER PUMP 2 CK110PMP-002			
DESIGN ENGINEERING			
NUCLEAR POWER PLANT KRŠKO		KRŠKO, SLOVENIA	
MADE	CHECKED	LE APPROVAL	
1. F. FAKIN	2. M. KODRIC	3. V. DIRNBEK	
REFERENCE DRAWINGS:			
SCALE	B-208-030		CK 05 5
DRAWING NUMBER		SYSTEM	SH.NO. REV

Original Design Firm: HIDROMONTAŽA Maribor  
Replaced Manual Drawing: B-208-030 SH.05  
Last Revision And Date: 2 16.06.1994

THIS IS A CAD DRAWING AND SHOULD NOT BE REVISED OR MODIFIED MANUALLY

NO.	DATE	BY	REVISION	CKD.	BY	LE	APPR.
5	07.2004.	640	REV'D PER MOD. 392-CK-L				
4	10.2001		REV'D PER EEAR: 01-106				
3	18.11.97		CADD CONVERSION				





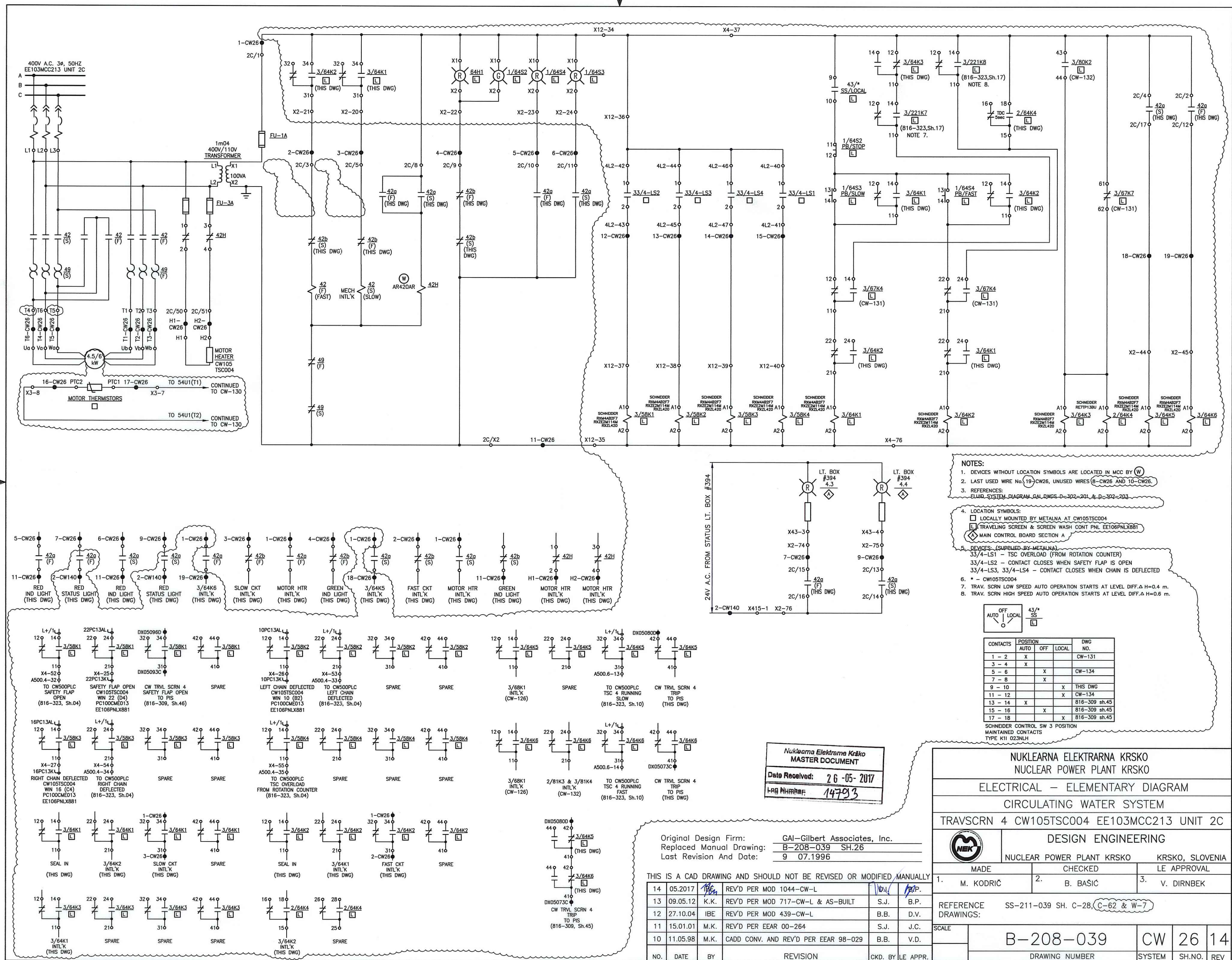
Nuklearna Elektrarna Krško MASTER DOCUMENT	
Date Received:	20-11-2019
Log Number:	16791

Original Design Firm:	GAI-Gilbert Associates Inc.		
Replaced Manual Drawing:	B-208-039 SH.24		
Last Revision And Date:	9 26.03.1995		

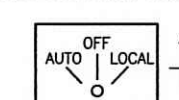
THIS IS A CAD DRAWING AND SHOULD NOT BE REVISED OR MODIFIED MANUALLY

16	19.11.19	K.K.	REV'D PER CAP 2013-1156	S.J.	B.P.
15	05.02.17	IBE	REV'D PER MOD 1044-CW-L	B.I.	B.P.
14	09.05.12	K.K.	REV'D PER MOD 717-CW-L & AS-BUILT	S.J.	B.P.
13	27.10.10	IBE	REV'D PER MOD 439-CW-L & AS-BUILT	B.B.	D.V.
12	15.01.01	M.K.	REV'D PER EEAR 00-264	S.J.	J.C.
NO.	DATE	BY	REVISION	CKD. BY	LE APP.





- NOTES:
1. DEVICES WITHOUT LOCATION SYMBOLS ARE LOCATED IN MCC BY (W)
  2. LAST USED WIRE NO. 19-CW26, UNUSED WIRES 6-CW26 AND 10-CW26.
  3. REFERENCES:  
ELIUD-SYSTEM DIAGRAM GAL DWGS-D-302-201 & D-302-203
  4. LOCATION SYMBOLS:  
□ LOCALLY MOUNTED BY METALNA AT CW105TSC004  
□ TRAVELING SCREEN & SCREEN WASH CONT. PNL EE106PNLX881  
◇ MAIN CONTROL BOARD SECTION A
  5. DEVICES: (SUPPLIED BY METALNA)  
33/4-LS1 - TSC OVERLOAD (FROM ROTATION COUNTER)  
33/4-LS2 - CONTACT CLOSURES WHEN SAFETY FLAP IS OPEN  
33/4-LS3, 33/4-LS4 - CONTACT CLOSURES WHEN CHAIN IS DEFLECTED
  6. \* - CW105TSC004
  7. TRAV. SCR. LOW SPEED AUTO OPERATION STARTS AT LEVEL DIFF. ΔH=0.4 m.
  8. TRAV. SCR. HIGH SPEED AUTO OPERATION STARTS AT LEVEL DIFF. ΔH=0.6 m.



CONTACTS	POSITION	AUTO	OFF	LOCAL	DWG NO.
1 - 2	X				CW-131
3 - 4	X				
5 - 6		X			CW-134
7 - 8			X		
9 - 10				X	THIS DWG
11 - 12				X	CW-134
13 - 14	X				816-309 sh.45
15 - 16		X			816-309 sh.45
17 - 18			X		816-309 sh.45

SCHNEIDER CONTROL SW 3 POSITION  
MAINTAINED CONTACTS  
TYPE K11 023NLH

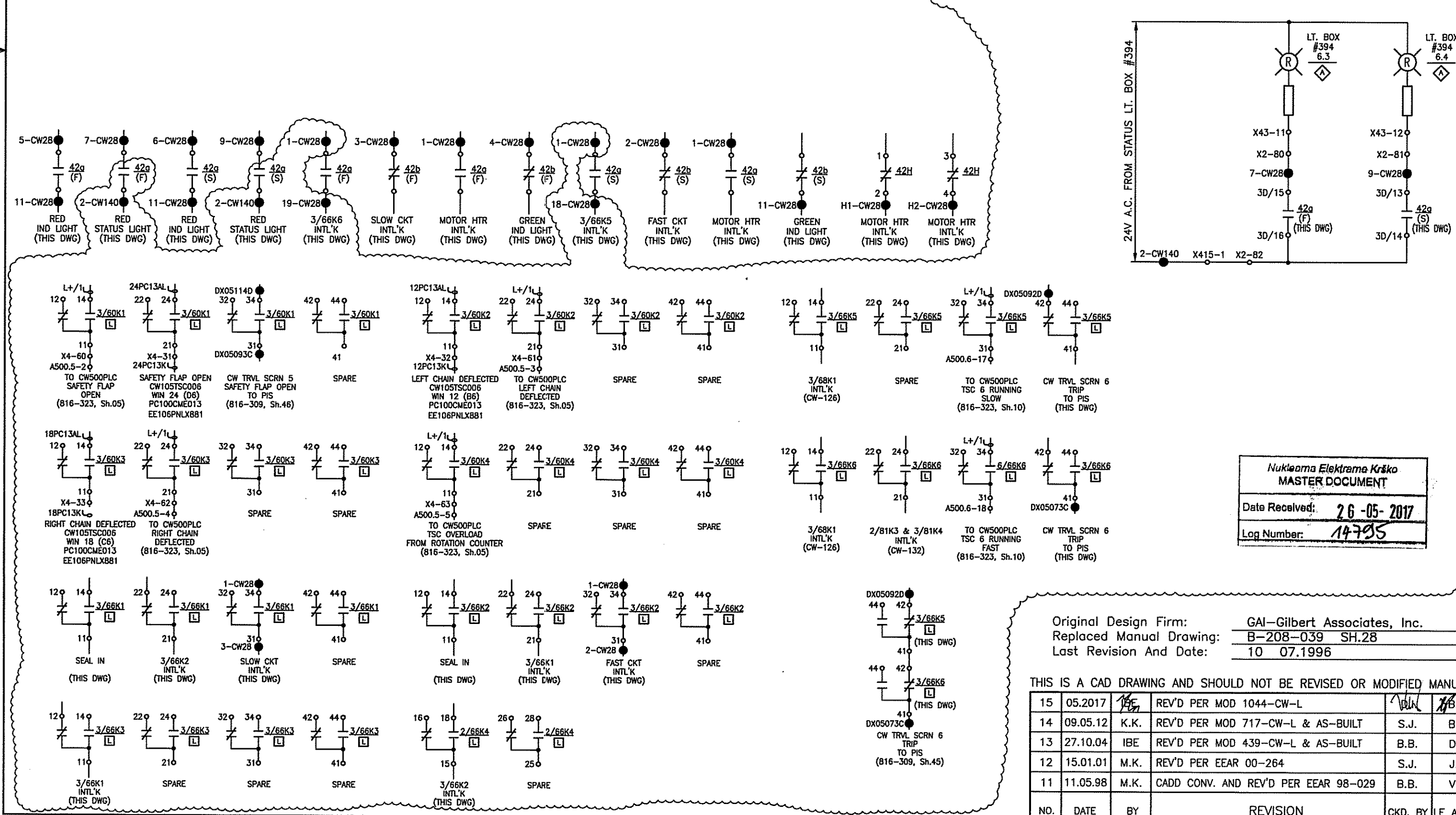
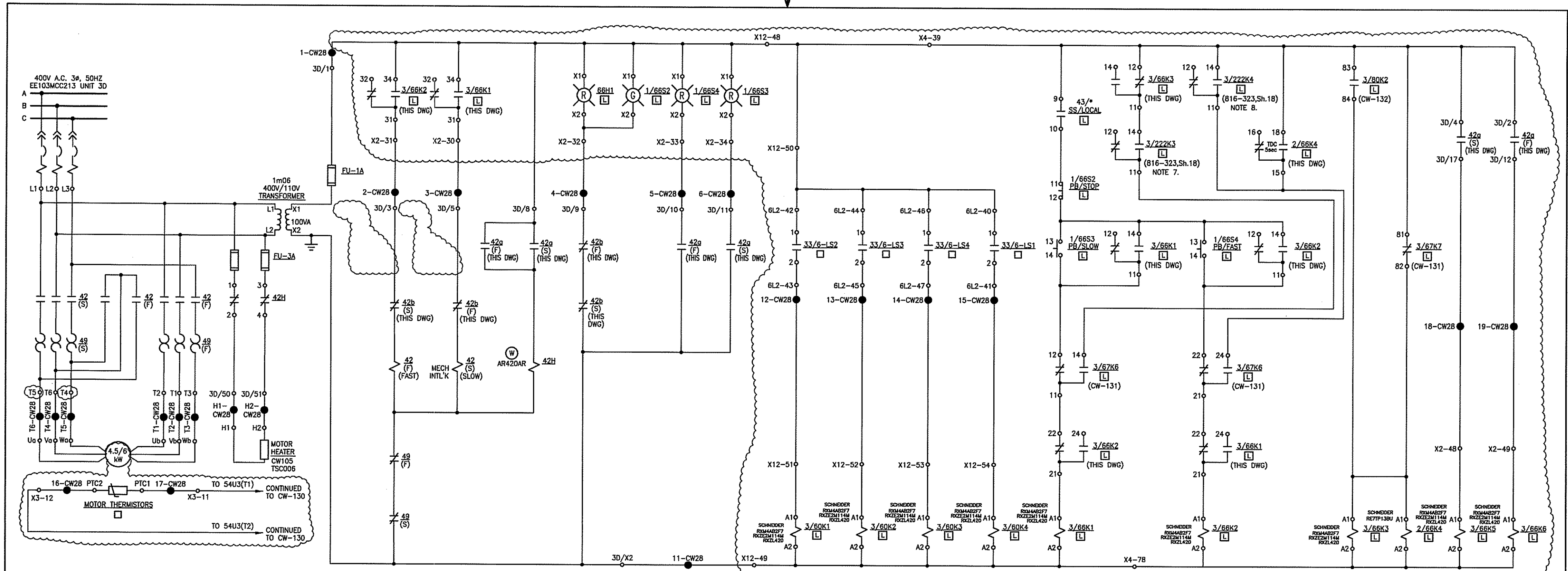
Nuklearna Elektrarna Krško  
MASTER DOCUMENT  
Date Received: 26-05-2017  
I-RG NHRMRP: 14723

Original Design Firm: GAL-Gilbert Associates, Inc.  
Replaced Manual Drawing: B-208-039 SH.26  
Last Revision And Date: 9 07.1996

THIS IS A CAD DRAWING AND SHOULD NOT BE REVISED OR MODIFIED MANUALLY					
NO.	DATE	BY	REVISION	CKD. BY	LE APPR.
14	05.2017	136	REV'D PER MOD 1044-CW-L	136	136
13	09.05.12	K.K.	REV'D PER MOD 717-CW-L & AS-BUILT	S.J.	B.P.
12	27.10.04	IBE	REV'D PER MOD 439-CW-L	B.B.	D.V.
11	15.01.01	M.K.	REV'D PER EEAR 00-264	S.J.	J.C.
10	11.05.98	M.K.	CADD CONV. AND REV'D PER EEAR 98-029	B.B.	V.D.

NUKLEARNA ELEKTRARNA KRŠKO NUCLEAR POWER PLANT KRŠKO		
ELECTRICAL - ELEMENTARY DIAGRAM		
CIRCULATING WATER SYSTEM		
TRAVSCRN 4 CW105TSC004 EE103MCC213 UNIT 2C		
DESIGN ENGINEERING		
MADE 1. M. KODRIČ		CHECKED 2. B. BAŠIČ
REFERENCE DRAWINGS: SS-211-039 SH. C-28, C-62 & W-7		LE APPROVAL 3. V. DIRNBEK
SCALE B-208-039		CW 26 14
DRAWING NUMBER		SYSTEM SH.NO. REV





**NOTES:**

1. DEVICES WITHOUT LOCATION SYMBOLS ARE LOCATED IN MCC BY 30.
2. LAST USED WIRE N. 193 CW28, UNUSED WIRES (8-CW28 AND 10-CW28).
3. REFERENCES:  
FLUID SYSTEM DIAGRAM GAI DWGS D-302-201 & D-302-203
4. LOCATION SYMBOLS:  
□ LOCALLY MOUNTED BY METALNA AT CW105TSC006  
▣ TRAVELING SCREEN & SCREEN WASH CONT PNL EE106PNLX881  
◇ MAIN CONTROL BOARD SECTION A
5. DEVICES (SUPPLIED BY METALNA)  
33/6-LS1 - TSC OVERLOAD (FROM ROTATION COUNTER)  
33/6-LS2 - CONTACT CLOSING WHEN SAFETY FLAP IS OPEN  
33/6-LS3, 33/6-LS4 - CONTACT CLOSING WHEN CHAIN IS DEFLECTED
6. CW105TSC006
7. TRAV. SCR. LOW SPEED AUTO OPERATION STARTS AT LEVEL DIFF. ΔH=0.4 m.
8. TRAV. SCR. HIGH SPEED AUTO OPERATION STARTS AT LEVEL DIFF. ΔH=0.6 m.

CONTACTS	POSITION	OFF	LOCAL	DWG NO.
1 - 2	X			CW-131
3 - 4	X			
5 - 6		X		CW-134
7 - 8		X		
9 - 10			X	THIS DWG
11 - 12			X	CW-134
13 - 14	X			816-309 sh.45
15 - 16		X		816-309 sh.45
17 - 18			X	816-309 sh.45

Nuklearna Elektrarna Krško  
MASTER DOCUMENT  
Date Received: 26-05-2017  
Log Number: 14705

Original Design Firm: GAI-Gilbert Associates, Inc.  
Replaced Manual Drawing: B-208-039 SH.28  
Last Revision And Date: 10.07.1996

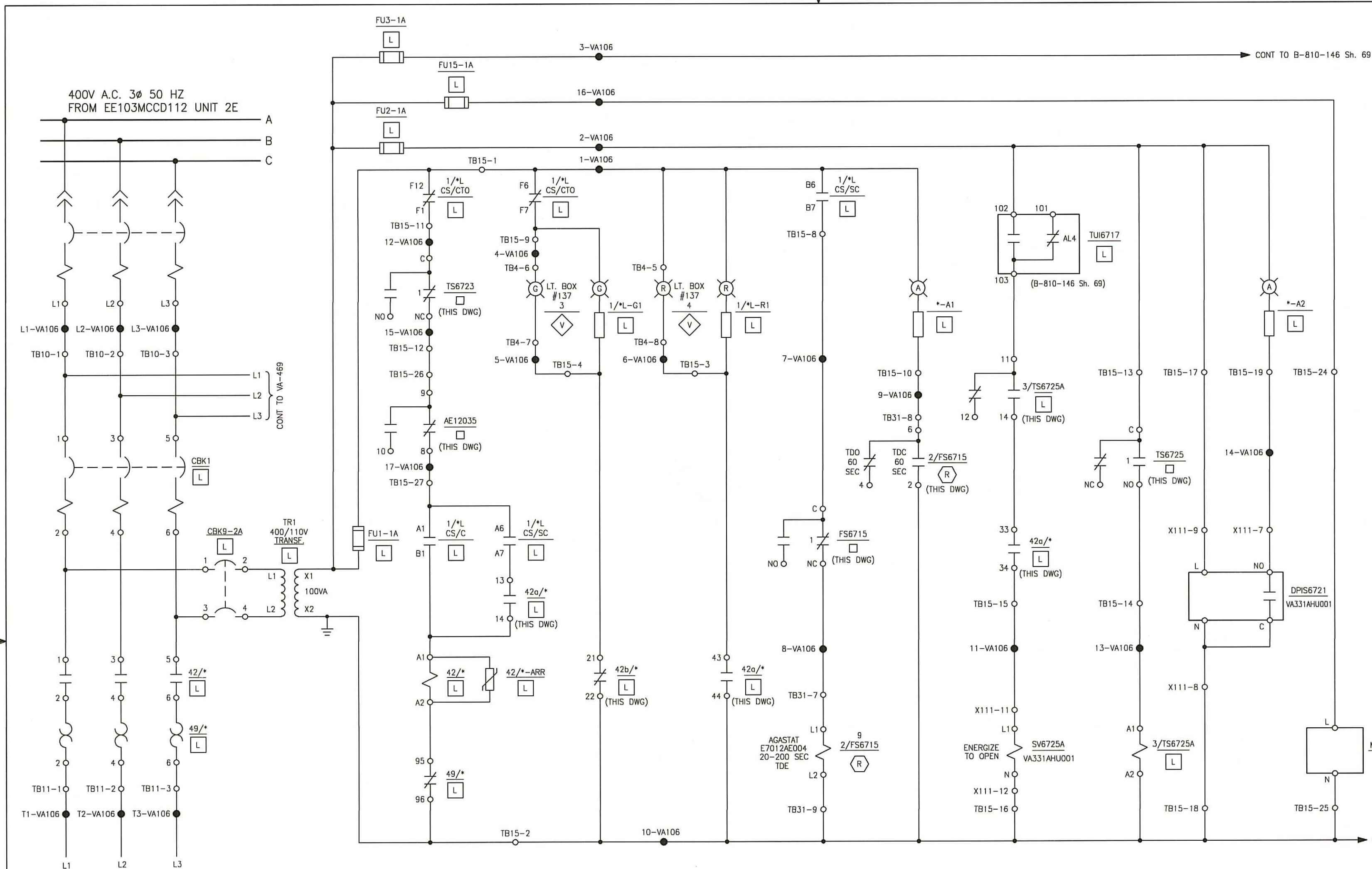
THIS IS A CAD DRAWING AND SHOULD NOT BE REVISED OR MODIFIED MANUALLY

NO.	DATE	BY	REVISION	CKD.	BY	LE APPR.
15	05.2017	RE	REV'D PER MOD 1044-CW-L			
14	09.05.12	K.K.	REV'D PER MOD 717-CW-L & AS-BUILT	S.J.	B.P.	
13	27.10.04	IBE	REV'D PER MOD 439-CW-L & AS-BUILT	B.B.	D.V.	
12	15.01.01	M.K.	REV'D PER EEAR 00-264	S.J.	J.C.	
11	11.05.98	M.K.	CADD CONV. AND REV'D PER EEAR 98-029	B.B.	V.D.	

NUKLEARNA ELEKTRARNA KRŠKO NUCLEAR POWER PLANT KRŠKO		
ELECTRICAL - ELEMENTARY DIAGRAM		
CIRCULATING WATER SYSTEM		
TRAVSCRN 6 CW105TSC006 EE103MCC213 UNIT 3D		
DESIGN ENGINEERING		
NUCLEAR POWER PLANT KRŠKO		KRŠKO, SLOVENIA
MADE	CHECKED	LE APPROVAL
1. M. KODRIČ	2. B. BASIC	3. V. DIRNBEK
REFERENCE DRAWINGS: SS-211-039 SH. C-30, C-63 & W-7		
SCALE	B-208-039	CW 28 15
DRAWING NUMBER		SYSTEM SH.NO. REV

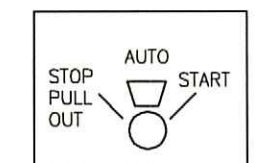
FILE: 20803928.DWG, SPREJEL:





NOTES:-

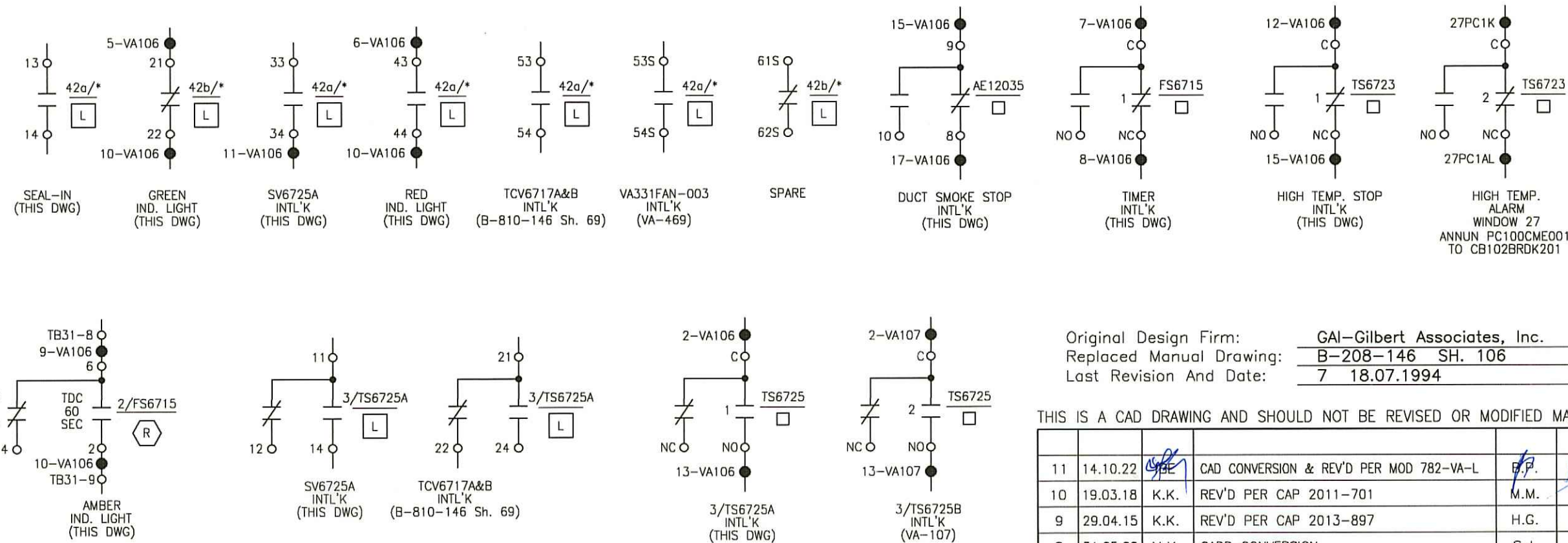
- DEVICES WITHOUT LOCATION SYMBOLS ARE LOCATED IN MCC.
- LAST USED WIRE NO. 17-VA106.
- REFERENCES:  
SYS. FUNC. DIAG. GAI DWG. B-801-330 SH. 1.  
INSTR. LOOP DIAG. GAI DWG. B-807-330 SH. 1.  
FLUID SYSTEM DIAG. GAI DWG. D-912-331.
- LOCATION SYMBOLS:  
□ LOCALLY MOUNTED  
⊗ BOP RELAY RACK EE106PNLK701  
⊞ LOCAL CONTROL STATION EE106PNLJ707  
⊞ VENTILATION BOARD CB102BRDK801
- \* - VA331AHU001.
- FS6715 - CONTACT 1 CLOSING ON LO AIR FLOW.  
TS6723 - CONTACTS 1 AND 2 OPEN ON HI RETURN AIR TEMP.  
TS6725 - CONTACTS 1 AND 2 CLOSING ON HI OUTSIDE AIR TEMP.  
DPIS6721 - CONTACT CLOSING ON HI DIFF. PRESS.  
TUI6717 - CONTACT AL4 102-103 CLOSING ON ADIABATIC COOLING PROGRAM.



CONTACTS HANDLE END	POSITIONS				
	P	T	T	OFF AFT.	C
A11-B11	X	X			
A12-B12			X		
A1-B1					X
A5-A6	X	X	X		
A6-A7				X	X
B5-B6	X	X	X		
B6-B7				X	X
C11-D11	X	X			
C12-D12			X	X	
C1-D1					X
C5-C6	X	X	X		
C6-C7				X	X
D5-D6	X	X	X		
D6-D7				X	X
E12-E1	X				
F12-F1		X	X	X	X
E6-E7	X				
F6-F7		X	X	X	X

TYPE W-2 SWITCH, 3 POSITION  
SPRING RETURN TO CENTER  
BASIC SW. S#508A162G01  
PISTOL GRIP FIXED HANDLE

CONT TO VA-475  
VA331AHU-001



MASTERS DOCUMENT  
Date Received: 14-02-2023  
Log Number: 15720

COMPLETELY REDRAWN

NUKLEARNA ELEKTRARNA KRSKO NUCLEAR POWER PLANT KRSKO		
ELECTRICAL - ELEMENTARY DIAGRAM		
VENT AND A/C SYS / IB STM HDR ROOMS CLG SYS		
STM HEADER ROOM AHU VA331AHU-001 EE103MCCD112 UNIT 2E		
DESIGN ENGINEERING		
NUCLEAR POWER PLANT KRSKO		KRSKO, SLOVENIA
MADE M. KODRIČ	CHECKED S. JERBIČ	LE APPROVAL D. VEHOVAR
REFERENCE DRAWINGS: SS-211-146 SH. C-13, C-121 & N-7		
SCALE	B-208-146	
DRAWING NUMBER		VA 106 11
NO.	DATE	BY
REVISION		CKD. BY LE APPR.

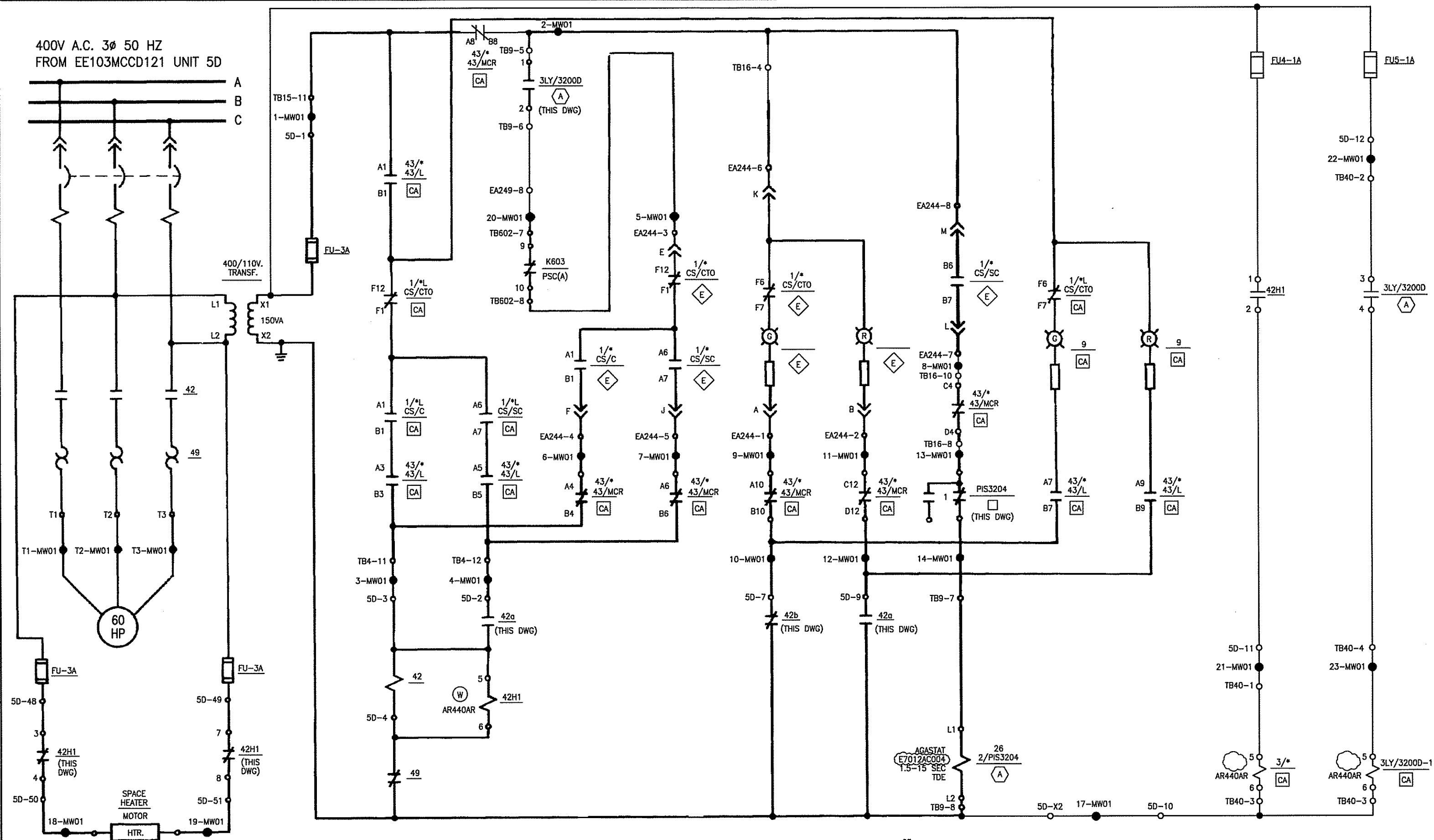
Original Design Firm: GAI-Gilbert Associates, Inc.  
Replaced Manual Drawing: B-208-146 SH. 106  
Last Revision And Date: 7 18.07.1994

THIS IS A CAD DRAWING AND SHOULD NOT BE REVISED OR MODIFIED MANUALLY

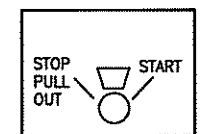
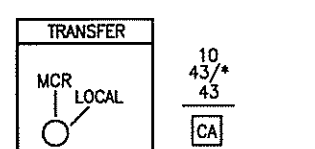
11	14.10.22	JZ	CAD CONVERSION & REV'D PER MOD 782-VA-L	B.P.	B.P.
10	19.03.18	K.K.	REV'D PER CAP 2011-701	M.M.	B.P.
9	29.04.15	K.K.	REV'D PER CAP 2013-897	H.G.	B.P.
8	31.05.00	M.K.	CADD CONVERSION	S.J.	D.V.



400V A.C. 3Ø 50 HZ  
FROM EE103MCCD121 UNIT 5D



- NOTES:-
1. DEVICES WITHOUT LOCATION MARKS ARE MOUNTED IN M.C.C.
  2. LAST USED WIRE NO. 23-MW01.
  3. REF. FUNC. DIAG. GAI DWG. B-802-790 SH. 1.  
REF. FLOW DIAG. GAI DWG. D-302-791.  
REF. INSTR. LOOP DIAG. GAI DWG. B-808-790 SH. 1 & 2.
  4. LOCATION SYMBOLS:  
CA COMPONENT COOLING LOCAL CONTROL PNL A EE106PNLR202  
□ LOCALLY MOUNTED  
E MAIN CONTROL BOARD SECT. E  
A SAFEGUARD RELAY RACK EE106PNLK101
  5. DEVICES:  
PIS3204 - CONTACTS 1, 2 CLOSE ON LO HEADER PRESSURE  
3LY/3200D - RELAY DE-ENERGIZES ON LO-LO REACTOR MAKEUP WATER STORAGE TANK LEVEL
  6. \* - MW100PMP01A.
  7. NON-SAFETY RELATED BUT MUST BE ELECTRICALLY SEPARATED FROM TRAIN A CABLING.
  8. K603 - CONTACT OPENS ON S.I.

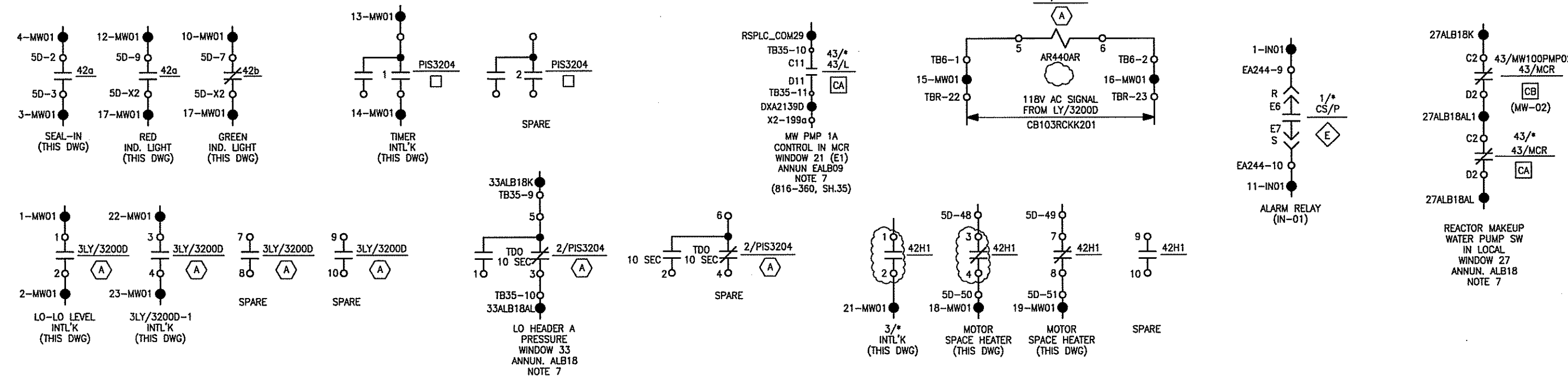


CONTACTS HANDLE END	POSITIONS			
	P	T	T	C
A11-B11	X	X	X	X
A12-B12	X	X	X	X
A1-B1	X	X	X	X
A5-A6	X	X	X	X
A6-A7	X	X	X	X
B5-B6	X	X	X	X
B6-B7	X	X	X	X
C11-D11	X	X	X	X
C12-D12	X	X	X	X
C1-D1	X	X	X	X
C5-C6	X	X	X	X
C6-C7	X	X	X	X
D5-D6	X	X	X	X
D6-D7	X	X	X	X
E12-E1	X	X	X	X
F12-F1	X	X	X	X
F6-F7	X	X	X	X

CONTACT	MCR	POS.	DWG
A12-B12	X	X	SPARE
A1-B1	X	X	THIS DWG
A2-B2	X	X	SPARE
A3-B3	X	X	THIS DWG
A4-B4	X	X	THIS DWG
A5-B5	X	X	THIS DWG
A6-B6	X	X	THIS DWG
A7-B7	X	X	THIS DWG
A8-B8	X	X	THIS DWG
A9-B9	X	X	THIS DWG
A10-B10	X	X	THIS DWG
A11-B11	X	X	SPARE
C12-D12	X	X	THIS DWG
C1-D1	X	X	SPARE
C2-D2	X	X	THIS DWG
C3-D3	X	X	SPARE
C4-D4	X	X	THIS DWG
C5-D5	X	X	THIS DWG
C6-D6	X	X	THIS DWG
C7-D7	X	X	THIS DWG
C8-D8	X	X	THIS DWG
C9-D9	X	X	THIS DWG
C10-D10	X	X	THIS DWG
C11-D11	X	X	THIS DWG

TYPE W-2 SWITCH, 3 POSITION  
SPRING RETURN TO CENTER  
BASIC SWITCH S#5050A162501  
PISTOL GRIP FIXED HANDLE

TYPE W-2 SWITCH  
2 POSITION MAINTAINED  
BASIC SWITCH S#5050A65901  
PISTOL GRIP FIXED HANDLE



NUKLEARNA ELEKTRARNA KRŠKO  
NUCLEAR POWER PLANT KRŠKO  
Date Received: 23-07-2020  
Log Number: 15364

NUCLEAR SAFETY RELATED  
ENGINEERING SAFEGUARD A

NUKLEARNA ELEKTRARNA KRŠKO NUCLEAR POWER PLANT KRŠKO		
ELECTRICAL - ELEMENTARY DIAGRAM		
REACTOR MAKEUP WATER SYSTEM		
REACTOR MAKEUP WATER PUMP A MW100PMP01A EE103MCCD121 UNIT 5D		
DESIGN ENGINEERING		
NUCLEAR POWER PLANT KRŠKO KRŠKO, SLOVENIA		
MADE	CHECKED	LE APPROVAL
1. M. KODRIČ	2. S. JERBIČ	3. D. VEHOVAR
REFERENCE: SS-211-107 SH. A-1, A-2, C-1, C-3 & K-1		
DRAWINGS: SS-211-053 SH. A-47		
SCALE		
B-208-107 MW 01 12		
DRAWING NUMBER SYSTEM SH.NO. REV		

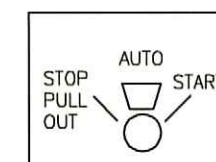
Original Design Firm: GAI-Gilbert Associates, Inc.  
Replaced Manual Drawing: B-208-107 SH. 01  
Last Revision And Date: 6 25.12.1980

THIS IS A CAD DRAWING AND SHOULD NOT BE REVISED OR MODIFIED MANUALLY				
12	23.07.20	REV'D PER CAP 2018-2687	N.M.	B.P.
11	25.04.18	V.S. REV'D PER MOD. 1007-XI-L	S.J.	D.V.
10	16.05.12	K.G. REV'D PER MOD 157-MW-L, FDCR01	N.I.	D.V.
9	01.10.11	K.K. REV'D PER CAP 2011-2636	S.J.	B.P.
8	11.2007	K.G. REV'D PER MOD 157-MW-L	N.I.	D.V.
NO.	DATE	BY	REVISION	CKD. BY LE APPR.



## NOTES:-

1. DEVICES WITHOUT LOCATION SYMBOLS ARE LOCATED IN MCC.
2. LAST USED WIRE NO. 17-VA107. NOT USED WIRE NO. 16-VA107.
3. REFERENCES:  
SYS. FUNC. DIAG. GAI DWG. B-801-330 SH. 1.  
INSTR. LOOP DIAG. GAI DWG. B-807-330 SH. 1.  
FLUID SYSTEM DIAG. GAI DWG. D-912-331.
4. LOCATION SYMBOLS:  
 LOCALLY MOUNTED  
 BOP RELAY RACK EE106PNLJ701  
 LOCAL CONTROL STATION EE106PNLJ707  
 VENTILATION BOARD CB102BRDK801
5. \* - VA331AHU002.
6. FS6716 - CONTACT 1 CLOSING ON LO AIR FLOW.  
TS6724 - CONTACTS 1 AND 2 OPEN ON HI RETURN AIR TEMP.  
DPIS6722 - CONTACT CLOSING ON HI DIFF. PRESS.  
TUI6718 - CONTACT AL4 102-103 CLOSING ON ADIABATIC COOLING PROGRAM.



CONTACTS HANDLE END	POSITIONS				
	P	T	OFF AFT.	C	C
A11-B11	X	X			
A12-B12			X	X	
A1-B1					X
A5-A6	X	X	X		
A6-A7				X	X
B5-B6	X	X	X		
B6-B7				X	X
C11-D11	X	X			
C12-D12			X	X	
C1-D1					X
C5-C6	X	X	X		
C6-C7				X	X
D5-D6	X	X	X		
D6-D7				X	X
E12-E1	X				
F12-F1		X	X	X	X
E6-E7	X				
F6-F7		X	X	X	X

TYPE W-2 SWITCH, 3 POSITION  
SPRING RETURN TO CENTER  
BASIC SW. S#508A162G01  
PISTOL GRIP FIXED HANDLE

DATE RECEIVED:	14-02-2013
LOG NUMBER:	15701

COMPLETELY REDRAWN

NUKLEARNA ELEKTRARNA KRSKO  
NUCLEAR POWER PLANT KRSKO

ELECTRICAL - ELEMENTARY DIAGRAM

VENT AND A/C SYS / IB STM HDR ROOMS CLG SYS

STM HEADER ROOM AHU VA331AHU-002 EE103MCCD212 UNIT 2B

DESIGN ENGINEERING

NUCLEAR POWER PLANT KRSKO KRSKO, SLOVENIA

MADE CHECKED LE APPROVAL

1. M. KODRIČ 2. S. JERBIČ 3. D. VEHOVAR

REFERENCE SS-211-146 SH. C-14, C-122, N-7  
DRAWINGS:

SCALE

B-208-146

VA 107 11

DRAWING NUMBER SYSTEM SH.NO. REV

Original Design Firm: GAI-Gilbert Associates, Inc.  
Replaced Manual Drawing: B-208-146 SH. 107  
Last Revision And Date: 7 01.07.1994

THIS IS A CAD DRAWING AND SHOULD NOT BE REVISED OR MODIFIED MANUALLY

NO.	DATE	BY	REVISION	CKD. BY	LE APPR.
11	14.10.22	B.P.	CAD CONVERSION & REV'D PER MOD 782-VA-L	B.P.	B.P.
10	19.03.18	K.K.	REV'D PER CAP 2011-701	M.M.	B.P.
9	29.04.15	K.K.	REV'D PER CAP 2013-897	H.G.	B.P.
8	31.05.00	M.K.	CADD CONVERSION	S.J.	D.V.

